

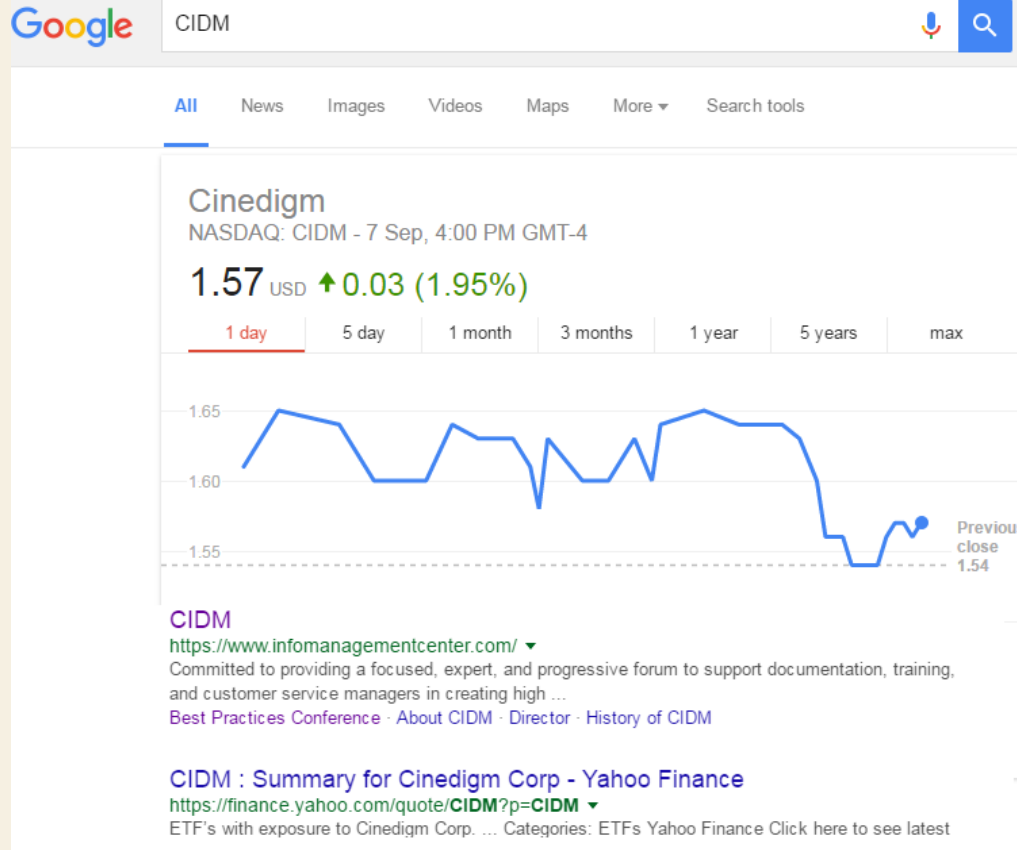


www.huawei.com

Product Information Self-service Query

JINGFENG MA

Background



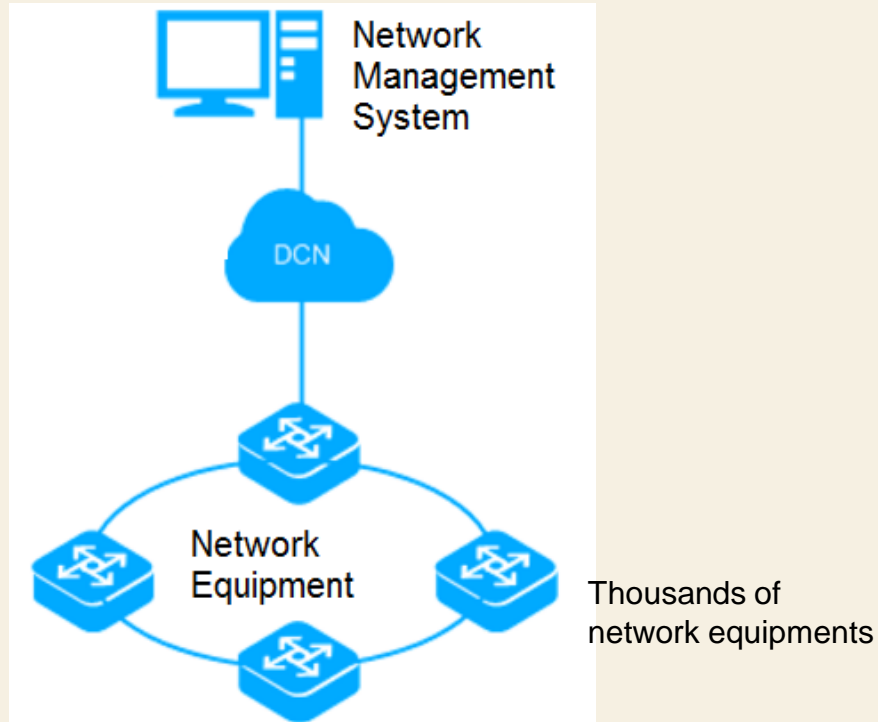
Event Guide

Best Practices CIDM
Santa Fe, New Mexico
September 12-14, 2016

- Speakers
- Schedule
- Sponsors
- Networking
- Floorplans & Maps
- Restaurants
- Follow Us
- Book Recommendation
- Conference Details
- Search

Your event is **3** days away

Background



When upgrading, engineers need to obtain version mapping and version changes from the massive information.

Whether can we also provide version mapping information by self-service query tools?

Phase 1 : Reference Information

Which kind of reference information can be self-service queried.

- Large quantities
- Content formatter
- High usage rate

U2000 Version	NE Name	NE Version	OS Version
U2000V200R016C50	Optix PTN 3900	V100R001C01	5.59.01.10
U2000V200R016C50	Optix PTN 3900	V100R001C02	5.59.01.30
U2000V200R016C50	Optix PTN 3900	V100R001C03	5.59.01.50
U2000V200R016C50	Optix PTN 3900	V100R002C00	5.59.02.10
U2000V200R016C50	Optix PTN 3900	V100R002C01	5.59.02.30
U2000V200R016C50	Optix PTN 3900	V100R002C02	5.59.02.50
U2000V200R016C50	Optix PTN 3900	V100R002C03	5.59.02.60
U2000V200R016C50	Optix PTN 3900	V100R002C05	5.59.02.70
U2000V200R016C50	Optix PTN 3900	V100R002C02	5.59.02.90
U2000V200R016C50	Optix PTN 3900	V100R003C01	5.59.03.20

Phase 1 : Reference Information--NE Mapping Query

Old Description

NMS Version	U2000V200R014C60		
Mapping Principle: 1. If the mapping table provides only the information that a.bb.cc.20 is supported by version A of the U2000, a.bb.cc.2x is supported by version A of the U2000. 2. If the mapping table provides only the information that a.bb.cc is supported by version A of the U2000, a.bb.cc.xx is supported by version A of the U2000.			
Equipment Series	Equipment	Supported NE Software Version	Remarks
PTN	OptiX PTN 905A	5.123.05.30	V100R005C01
		5.123.06.30	V100R006C10
	OptiX PTN 905B	5.124.05.30	V100R005C01
		5.124.06.30	V100R006C10
	OptiX PTN 7900-32	8.128.06.10	V100R006C00
		8.128.06.20	V100R006C10
		8.128.06.30	V100R006C20
	OptiX PTN 7900-24	8.135.06.20	V100R006C10
8.135.06.30		V100R006C20	

New Description

Query U2000 by NE | Query NE by U2000

Query Criteria 🔍

Domain : **Any** IP Transport Access

NE Type : PTN ▼

NE Name : OptiX PTN 7900-24 ▼

NE Version : V100R007C00 ▼

NE Name	NE Version	OS Version	U2000 Version
OptiX PTN 7900-24	V100R007C00	8.135.07.10	U2000V200R015C60SPC200
OptiX PTN 7900-24	V100R007C00	8.135.07.10	U2000V200R015C50SPC200
OptiX PTN 7900-24	V100R007C00	8.135.07.10	U2000V200R016C50SPC200

http://support.huawei.com/online/toolsweb/platform/index_en.html

Phase 1 : Reference Information--Upgrade Path Query

Old Description

1.1 Upgrade Paths

This section describes the requirement on the U2000 versions to be upgraded.

Versions earlier than the V200R014C60SPC200 cannot be directly upgraded to the

V200R015C60SPC200. They must be upgraded to V200R014C60SPC200 first.

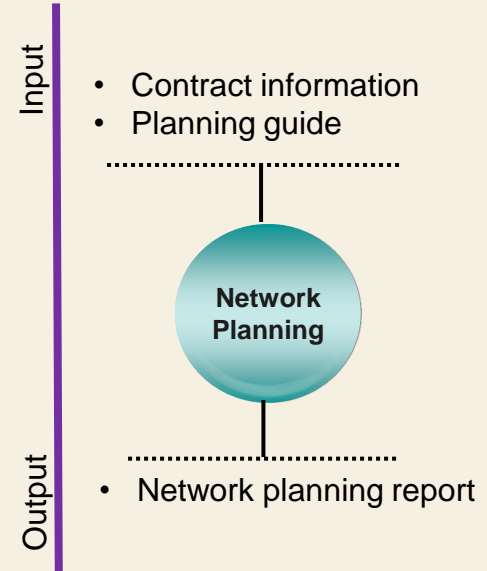
Version	Description
U2000 V200R014C60SPC200	This version can be directly upgraded to the V200R015C60SPC200.
Version earlier than the U2000 V200R014C60SPC200	This version needs to be upgraded to the U2000 V200R014C60SPC200 before being upgraded to the U2000 V200R015C60SPC200.
U2000 V200R014C60SPC200	The U2000 can be directly upgraded to U2000 V200R015C60SPC200, but the latest U2000 V200R015C60SPC200 patch must be installed immediately.

New Description

The screenshot shows the 'U2000 Upgrade Path Query Tool' interface. It includes a Huawei logo and the tool title. The configuration section shows 'Domain Type' with 'Access' and 'IP' selected, and 'System Type' with 'Linux' selected. The 'Source Version' is 'V200R014C50SPC201' and the 'Target Version' is 'V200R015C60SPC200'. A 'Calculate Upgrade Path' button is visible. The results section shows 'Path1: V200R014C50SPC201-Upgrade->V200R014C60SPC200-Upgrade->V200R015C60SPC200'. A diagram illustrates the upgrade steps: V200R014C50 SPC201 is upgraded to V200R014C60 SPC200 in Step 1, and then to V200R015C60 SPC200 in Step 2. The domains 'Access, Transport, IP' are listed at the bottom.

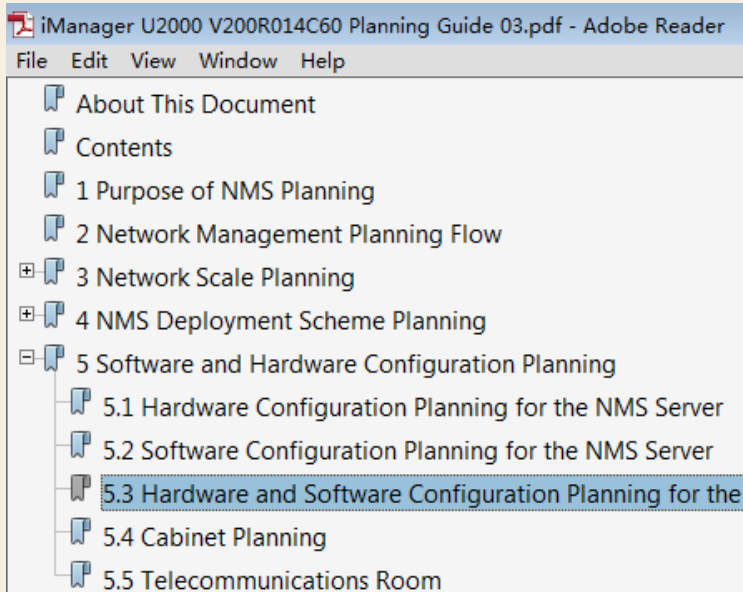
Phase2 : Planning Guide

Replace the planning guide with a tool to help the planning engineer output the network planning report.



Phase2 : Planning Guide--Planning Assistant

Old Description



New Description

Select Version : V200R014C60

Configure Hardware & Software

Clear Export

Network Scale: Small-scale network: less than 2000 equivalent NEs

Operating System: SUSE Linux

Server Model: IBM X3650 M4

Single or Dual Server: Local HA System

Network Port: Four network ports

Phase2 : Planning Guide--Version Difference Query

*Domain : All Tran Access IP Com DC PMS

*Source version :

*Target version :

Keyword :

 Query

Version Differences

Port Changes


Alarm Changes

Known and Resolve Issues

Server Data Management

Change Type	Alarm ID	Alarm Name	Description of Change	Reason for Change	Related features	GroupID	ReasonID	Application scenarios
New NE Alarm	2606005	TRILL Authentication Failure	Traps are printed if VRP V800R011-based routers fail the TRILL authentication.	To maintain consistency with new versions of devices.	Common	268382980	2606005	Distributed system+Centralized system
New NE Alarm	2606010	Interfaces of this type in use have reached the maximum number	License policies for the ATN V200R006 have changed.	To maintain consistency with new versions of devices.	Common	268382977	2606010	Distributed system+Centralized system

Phase 3 : Self-service Document Center

 **HUAWEI** | Single OSS Self-service Document Center

Select Product

- U2000**
- NetMatrix
- NetOpen

Basic Settings

Version number: Document type:

Select Model/FeatureName

Centralized (less than 20000 equivalent NEs) Distributed (more than 20000 equivalent NEs)

Select Component

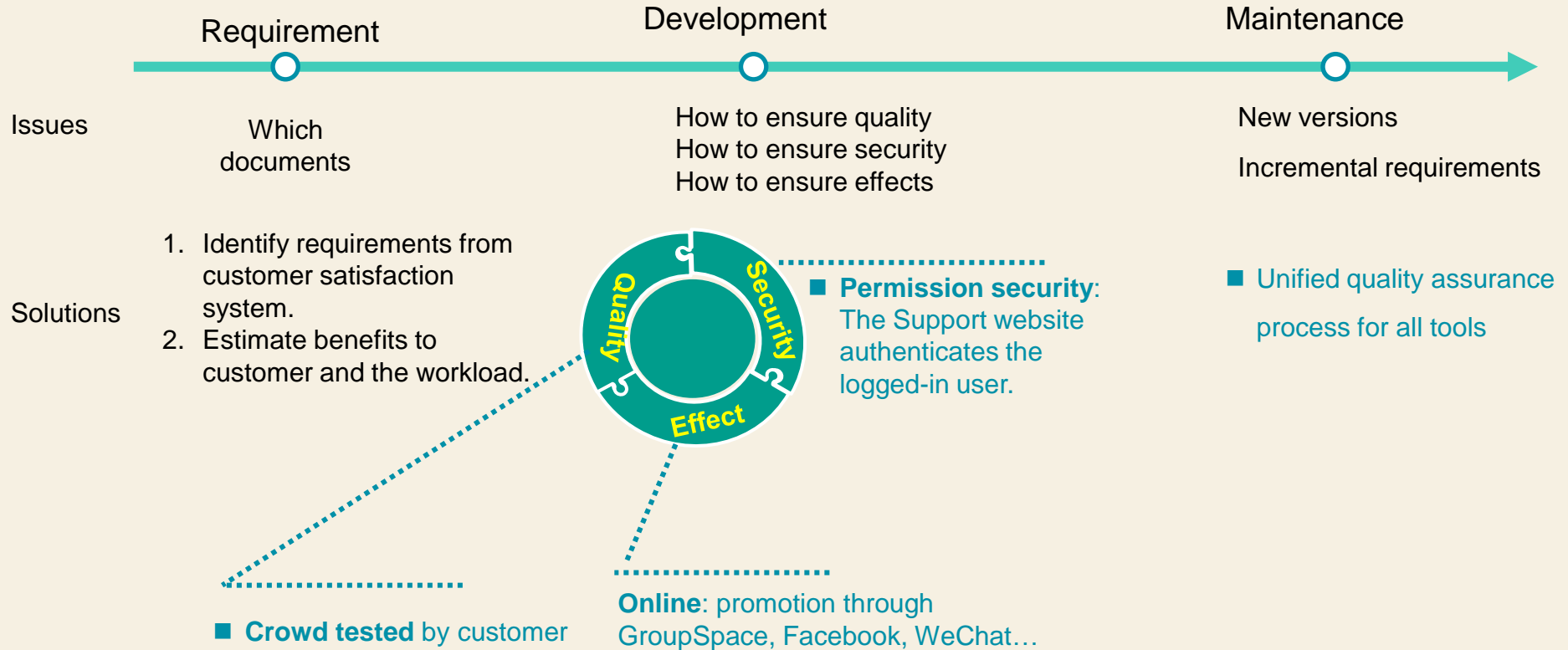
VMware VM Physical machine

Select HA

Single-Server System HA System (Veritas)

[View](#)

Appendix: Issues and Solutions



A man with dark hair and sunglasses, wearing a light grey jacket over a white shirt, is sitting on a concrete ledge. He is looking out towards the ocean under a clear blue sky. A silver laptop is open on the ledge in front of him. The scene is brightly lit, suggesting a sunny day.

Thank You
www.huawei.com